



Cortijo Pedro Jiménez

Wedding and private event venue

Casares, Malaga



CORTIJO PEDRO JIMENEZ

Cortijo Pedro Jiménez

Introduction to the venue



CORTIJO PEDRO JIMENEZ

- Built in 1987 and surrounded by 40 hectares of nature, El Cortijo Pedro Jiménez is located on the top of a hill about 175 meters above sea level with stunning views of the coast, near the pretty village of Casares, at just 3.5 km from the beach and 38 km from Marbella
- El Cortijo has 2 floors and a constructed area of 1,230 m² distributed through 2 large patios, with gardens in excess of 3,500 m²
- Recently renovated, maintaining its essence and charm, El Cortijo has all the facilities, services and amenities that make it a perfect venue for weddings and all kind of private events

40 ha
private land

1,230 m²
constructed

>3,500 m²
gardens

8
bedrooms

16
beds

9
bathrooms

2
living rooms

1
kitchen-office

1
dining room

2
porches

2
patios

1
swimming pool

2
catering areas

1
lake

8
horse stables





I. The Venue



CORTIJO PEDRO JIMENEZ

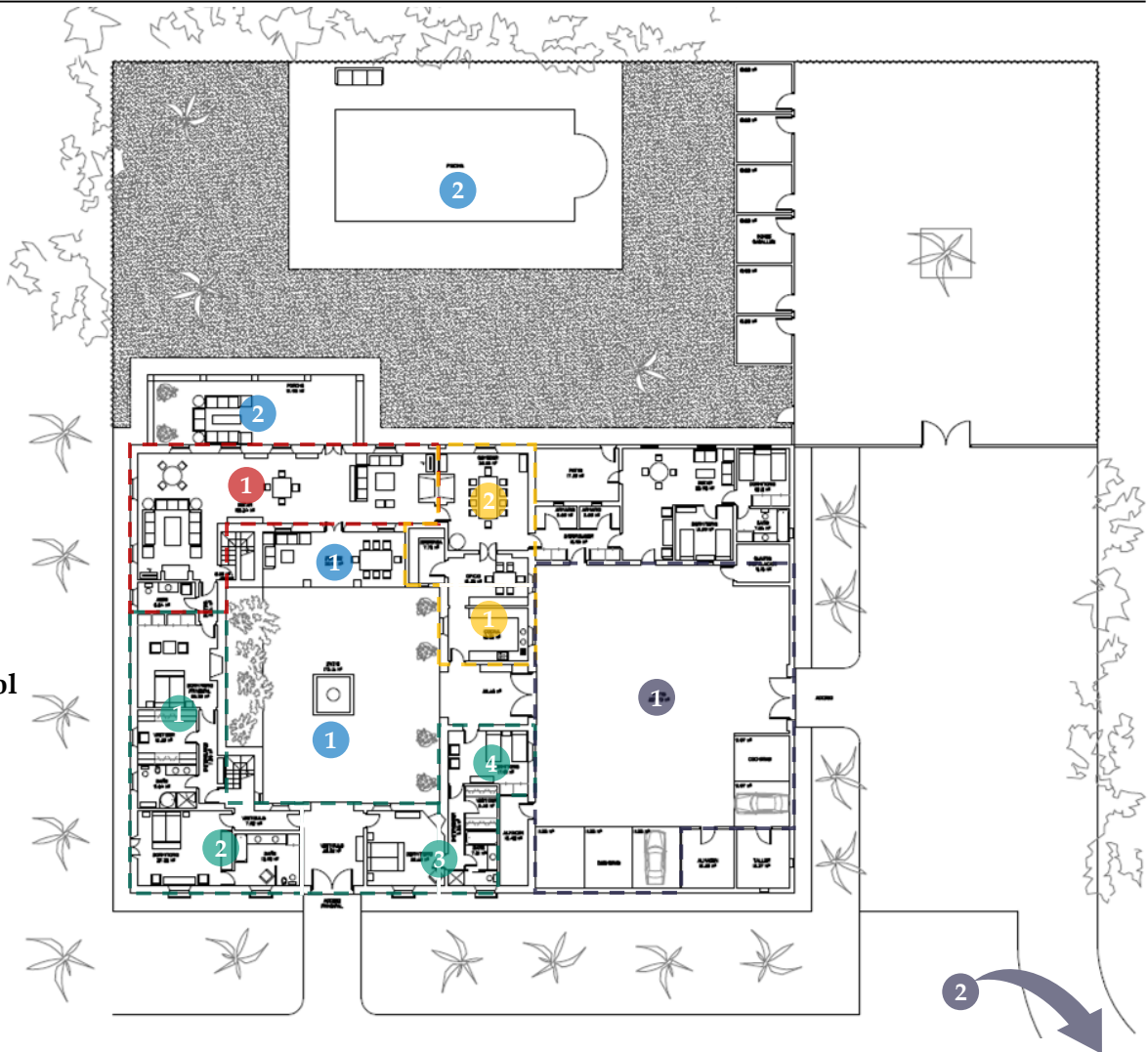
Ground floor



- The ground floor has a total constructed area of 1,098 m² distributed through bedrooms, living rooms, kitchen, dining room, porches and patios
- All spaces count with large windows that provide plenty of light and stunning views of patios and gardens

Venue areas

- I** Bedrooms
- II** Living rooms
- III** Kitchen, office and dining room
- IV** Main patio, porches and swimming pool
- V** Catering and parking



Ground floor (cont'd)

Bedrooms area



CORTIJO PEDRO JIMENEZ

1 Main bedroom 1

Comprised of 3 rooms: bedroom, dressing room and bathroom



Bedroom

Surface area: 28.4 m²

Amenities: king size bed (180 cm), closets, fireplace, safe box, 2 armchairs, TV, table, desk, shoe cabinet



Bedroom/dressing room¹

Surface area: 12.3 m²

Amenities: 2 beds (90 cm), closets



Bathroom

Surface area: 9.6 m²

Amenities: double sink with cabinets, bathtub with shower, separate shower, toilet, bidet

2 Main bedroom 2

Comprised of 2 rooms: bedroom and bathroom



Bedroom

Surface area: 27.4 m²

Amenities: 2 double beds (135 cm), closets, desk, dresser



Bathroom

Surface area: 13.9 m²

Amenities: sink with cabinets, bathtub with shower, closets, toilet, bidet

1. The room can be used as a dressing room or as a bedroom indistinctly

Ground floor (cont'd)

Bedrooms area



CORTIJO PEDRO JIMENEZ

3 Bedroom 3

Comprised of 2 rooms: bedroom and bathroom



Bedroom

Surface area: 22.4 m²

Amenities: 2 beds (90 cm), closet, fireplace, desk, tallboy



Bathroom

Surface area: 7.8 m²

Amenities: double sink with cabinets, bathtub with shower, separate shower, toilet, bidet



4 Bedroom 4

Comprised of 2 rooms: bedroom and bathroom



Bedroom

Surface area: 17.9 m²

Amenities: 2 beds (90 cm), closets, tallboy, desk



Bathroom

Surface area: 5.5 m²

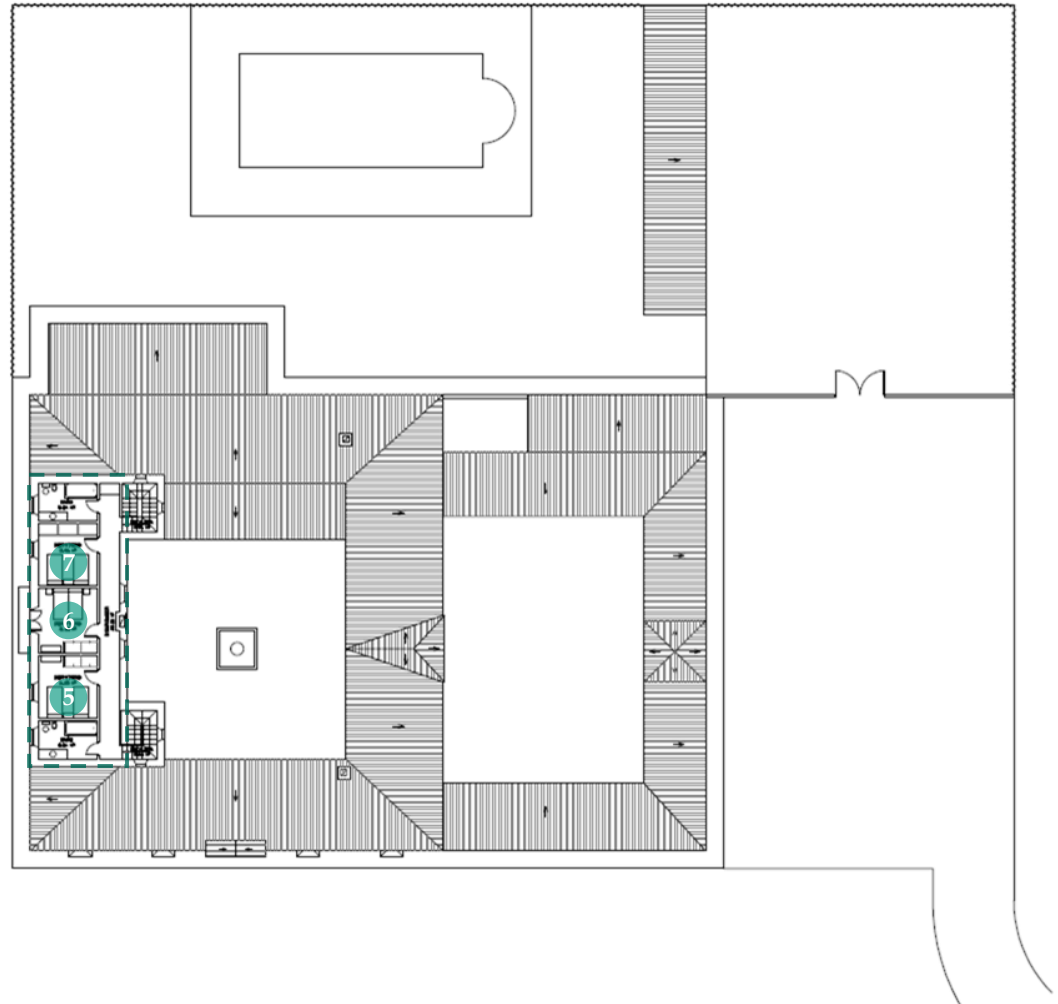
Amenities: sink with cabinet, separate shower, toilet

Second floor



CORTIJO PEDRO JIMENEZ

- The second floor has 3 bedrooms and 2 bathrooms, all of them with stunning views of the coast and venue gardens
- A wide corridor with large windows towards the patio connects both bathrooms with the bedrooms



Second floor (cont'd)

Bedrooms area



CORTIJO PEDRO JIMENEZ

5 Bedroom 5



Bedroom

Surface area: 14.3 m²

Amenities: 2 beds (90 cm), closets

6 Bedroom 6



Bedroom

Surface area: 15.4 m²

Amenities: queen size bed (150 cm), desktop, dresser, balcony

7 Bedroom 7



Bedroom

Surface area: 14.0 m²

Amenities: 2 beds (90 cm), closets



Bathroom

Surface area: 8.6 m²

Amenities: sink with cabinets, bathtub with shower, toilet, bidet

Bathroom

Surface area: 8.6 m²

Amenities: sink with cabinets, bathtub with shower, wicker tallboy, toilet, bidet

Both bathrooms are shared between the 3 bedrooms of the second floor

Ground floor (cont'd)

Living rooms area



CORTIJO PEDRO JIMENEZ

1 Main living room

It is split into 2 independent living rooms, each of them with its own fireplace. The living room also has game tables and a lavatory

Surface area: 100.3 m²



With direct access to the dining room, it connects the main patio with the swimming pool. Among others, it has:

1
sofa

4
armchairs

1
fireplace

1
game table¹



With direct access to bedrooms and to the lavatory, the living room has, among others:

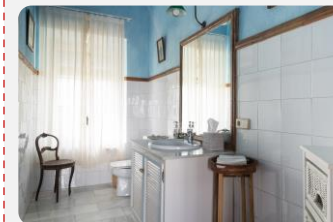
3
sofas

1
TV

1
fireplace

1
trunk

Lavatories



Surface area: 1 lavatory with 6.5 m² and 2 with 5.0 m²

Amenities: sink with cabinets, toilet

1. Large round game table

Ground floor (cont'd)

Kitchen, office and dining room area



1 Kitchen/office

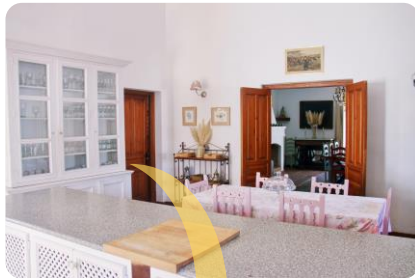
It has an office and an ample pantry



Kitchen

Surface area: 16.7 m²

Amenities: oven, kitchenware, microwave, fridge, freezer, coffee maker, boiler, blender, juicer, crockery, glassware, cutlery, other furniture



Office

Surface area: 16.3 m²

Amenities: 180x78 cm table with 6 chairs¹



Pantry

Surface area: 7.8 m²

2 Dining room

It has 2 large tables and direct access to both kitchen and living room



Dining room

Surface area: 32.9 m²

Amenities: 244x94 cm table with 10 chairs¹, 180 cm diameter round table with 6 chairs¹, fireplace, other furniture



1. Feasible to increase # chairs

Ground floor (cont'd)

Main patio, porches and swimming pool area



CORTIJO PEDRO JIMENEZ

1 Main patio and porch 1



Surface area: 173.2 m²



Surface area: 30.8 m²

2 Garden and porch 2



Surface area: 52.0 m²

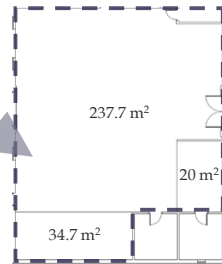
Ground floor (cont'd)

Catering and parking area



1 Catering area

It has 2 covered working areas and a large patio



Surface area¹: 292.4 m²

2 Parking

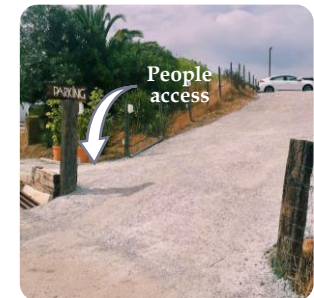
Broad esplanade with direct access from paved road



Surface area: 5,500 m²



1. 54.7 m² covered surface





II. Some views of the venue



CORTIJO PEDRO JIMENEZ

Some views of the venue

The venue from the air



CORTIJO PEDRO JIMENEZ



Some views of the venue (cont'd)

Gardens



CORTIJO PEDRO JIMENEZ



Some views of the venue (cont'd)

Main patio



Some views of the venue (cont'd)

How to enjoy the venue





III. Contact and location



CORTIJO PEDRO JIMENEZ

Contact and location

Contact



CORTIJO PEDRO JIMENEZ

Contact persons



Rocío Parladé

Tel: +34 606 99 12 79

Email: cortijopedrojimenez@gmail.com



Andrea de la Joya

Tel: +34 650 737 206

Email: cortijopedrojimenez@gmail.com

Find out more about El Cortijo Pedro Jiménez



[cortijopedrojimenez](https://www.instagram.com/cortijopedrojimenez)



[Cortijo Pedro Jiménez](https://www.facebook.com/CortijoPedroJimenez)



<https://www.bodas.net/cortijos/cortijo-pedro-jimenez--e97924>



Location



- El Cortijo Pedro Jiménez is located in the municipality of Casares, province of Málaga, more specifically at a distance of 3.5 km from the CN-340 Malaga-Cadiz. The entrance to the property is from the Casares road (MA8300) and The Venue is reached through a paved road. The property has several dirt roads all around its perimeter
- Currently and thanks to the new layout of the CN-340 and to the Costa del Sol motorway, we are close to many places of international interest, such as: i) the golf courses of Finca Cortesín (with which the property borders), Valderrama and Sotogrande; ii) the marina of La Duquesa, Estepona, Sotogrande and Puerto Banús; and iii) the airports of Malaga and Gibraltar



Casares: village



Finca Cortesín: golf course



La Duquesa: golf course



Sotogrande: golf course



Valderrama: golf course

Location (cont'd)

Distances in km



CORTIJO PEDRO JIMENEZ

The Venue is located close to many places of international interest:

- Finca Cortesín (1.5 km): golf course, spa, restaurants
- Sabinillas (5 km): famous street market on Sunday mornings, roman baths
- Puerto de la Duquesa (6.5 km): marina, golf course
- Estepona (9.5 km): local beaches, shops, restaurants, bars, marina, equestrian centre, natural park, Selwo park, golf courses, bullring
- Sotogrande (17 km): marina, shops, bars, restaurants, golf courses, polo
- Puerto Banús (33 km): marina, shops, nightlife, restaurants, bars
- Marbella (38 km): shops, restaurants, beach bars, nightlife, museums, galleries, theme park, bullring
- Gibraltar (41 km): international airport, shops, casino
- Algeciras (43 km): ferry to Morocco, bullring, train station Renfe
- Ronda (63.5 km): historical town, antiquary shops, restaurants, bullring, train station Renfe
- Malaga (89 km): international airport, train station Renfe, Costa del Sol Shopping Centre



Puerto Banús: marina



Marbella: Golden Mile



Estepona: bullring



Sotogrande: marina



Ronda: El Puente Nuevo



Gibraltar: the rock